

Sharp-shinned Hawks at Hook Mountain

(prepared by Drew Panko)

COLUMN A: average number of SHARPIES seen on this day over all years

TOTAL SHARPIES SEEN '88-'03: 42935

COLUMN B: average cumulative total of Sharpies seen UP TO this date over all years

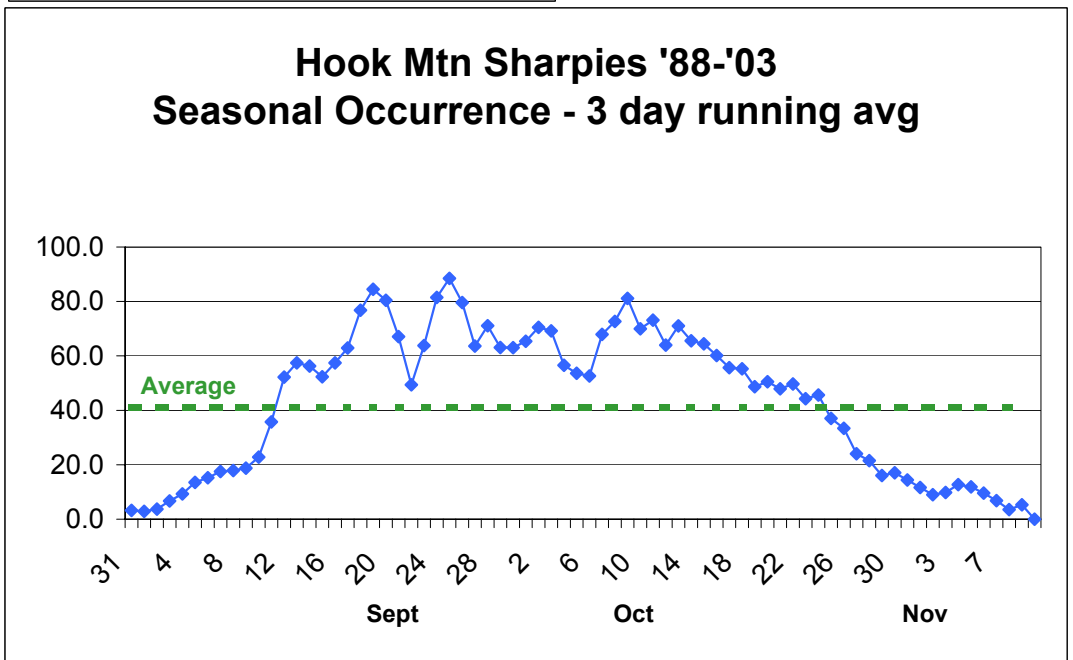
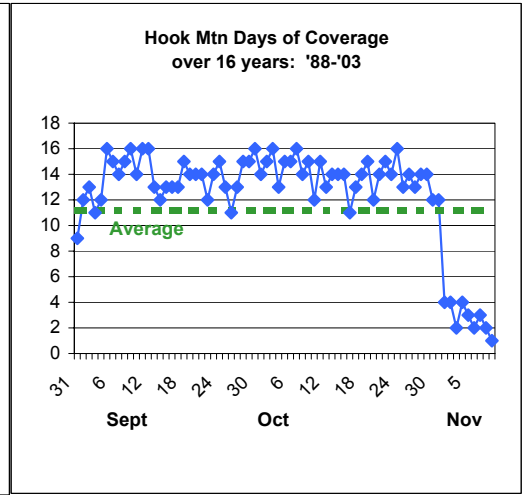
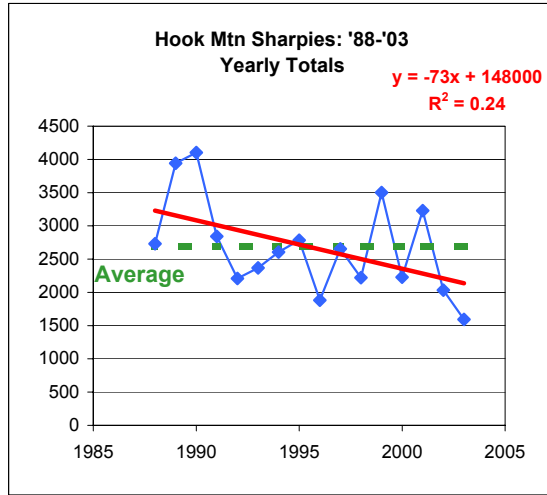
COLUMN C: cumulative total of SHARPIES seen up to this date THIS YEAR

TOTAL DAYS OF COVERAGE '88-'03: 914

COLUMN D: MAXIMUM number of SHARPIES ever seen on this date

Average SSs/year since '88: 2683
Average SSs/day since '88: 41

Date	# of days cov	cumulative		this year C	MAXIMUM EVER SEEN ON DATE D
		avg /day A	to date B		
8/27	2	1	0		1
8/28	4	0	0		1
8/29	4	3	1		6
8/30	9	2	2		6
8/31	9	0	3		12
9/1	12	3	6		10
9/2	13	3	8		11
9/3	11	5	12		14
9/4	12	0	21		31
9/5	16	10	31		33
9/6	15	18	48		72
9/7	14	17	63		93
9/8	15	17	79		89
9/9	16	19	99		88
9/10	14	20	116		56
9/11	16	29	145		62
9/12	16	58	203		126
9/13	13	69	260		222
9/14	12	45	293		111
9/15	13	54	338		123
9/16	13	57	384		182
9/17	13	60	433		189
9/18	15	71	500		169
9/19	14	99	587		265
9/20	14	84	660		394
9/21	14	59	711		144
9/22	12	59	755		119
9/23	14	30	782		67
9/24	15	102	877		240
9/25	13	112	968		356
9/26	11	51	1004		94
9/27	13	75	1065		236
9/28	15	64	1125		126
9/29	15	74	1194		171
9/30	16	52	1246		107
10/1	14	64	1302		177
10/2	15	81	1377		285
10/3	16	67	1444		300
10/4	13	60	1493		155
10/5	15	43	1533		102
10/6	15	58	1588		193
10/7	16	57	1644		145
10/8	14	89	1722		212
10/9	15	72	1790		210
10/10	12	82	1852		323
10/11	15	55	1903		114
10/12	13	82	1970		232
10/13	14	55	2018		123
10/14	14	76	2085		245
10/15	14	66	2142		159
10/16	11	51	2177		91
10/17	13	63	2229		246
10/18	14	52	2275		106
10/19	15	50	2322		169
10/20	12	44	2354		101



Date	cov	A	B	C	D
10/21	14	57.7	2405		247
10/22	15	42.5	2445		128
10/23	14	48.8	2487		141
10/24	16	41.6	2529		124
10/25	13	46.5	2567		196
10/26	14	23.0	2587		85
10/27	13	30.7	2612		83
10/28	14	18.5	2628		72
10/29	14	15.4	2641		74
10/30	12	14.3	2652		29
10/31	12	21.4	2668		55
11/1	4	7.5	2670		10
11/2	4	6.0	2672		17

Date	cov	A	B	C	D
11/3	2	13.5	2673		17
11/4	4	10.0	2676		26
11/5	3	14.7	2678		30
11/6	2	11.0	2680		14
11/7	3	3.0	2680		6
11/8	2	6.5	2681		13
11/9	1	1.0	2681		1
11/10	3	8.3	2683		23
11/11			Too little coverage		
11/12			to be		
11/13			Meaningful		
11/14			to calculate		
11/15					